

SOCA LABS

CERTIFIED ANALYSIS

Prepared for:

BBB-ISO-HG-112018-111908-02

Platinumxcbd

Batch ID: L199102260

Test ID: Single lollipop

Reported:

Type: Infused

Sample Date: 01/03/2020

Test: R & D

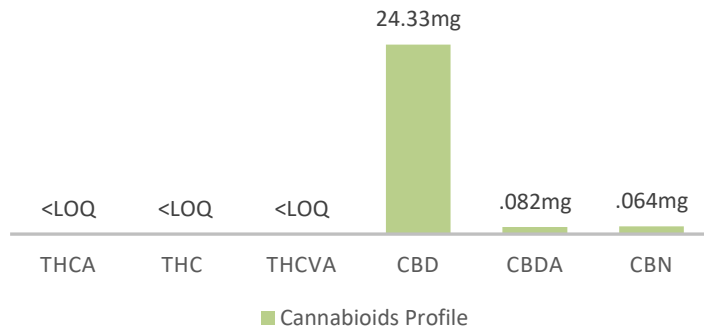
CANNABINOID PROFILE

TOTAL ACTIVE CANNABINOIDS:

■ Total THC ■ Total CBD



Cannabinoids Profile



**Total Cannabinoids result reflects the absolute sum of all cannabinoids detected*

***Total Potential THC/CBD is calculated using the following formulas to take into account loss of carboxyl group during decarboxylation step*

Total THC = THC + (THCa(0.877)) and total CBD = CBD + (CBDa*(.0877))*

%=(w/w) = Percent (Weight of analyte / Weight of Product)

NOTES:

Free from Visual mold, mildew or any foreign matter.

FINAL APPROVAL

Oscar Gonzalez

20-Jan-2020

2:02 PM

David Nobel

21-Jan-2020

2:40 PM

PREPARED BY / DATE

APPROVED BY / DATE

Testing results are based solely upon the sample submitted to SOCA Labs, in the condition it was received. SOCA Labs warrants that all analytical work is conducted professionally in accordance with all applicable standard laboratory practices using validated methods. Data was generated using an unbroken chain of comparison to standard laboratory practices. This report may not be reproduced, except in full, without written approval of SOCA Labs.